



2022

YEAR 7

North Campus

Northumberland Road, Sunshine North
(03) 8311 8500

West Campus

25A Lachlan Road, Sunshine West
(03) 8311 5200

CONTENTS

Welcome from the Principal	3
The Daily Schedule	
Bell Times	4
Hot Day Timetable	4
Lockers	5
Mobile Phones	6
Student Expectations	
Student Diary	6
Attendance	6
School Values	7
Homework	8
Uniform	8
Teaching & Learning	9
SunLit Program	10
Maths Futures Program	11
Instrumental Music	12
Deaf Facility	12
Communication	12
Parent Compass	13
Student Compass	13
Social Media	13
Resource List	14
Parent Payments	14
Bus Service	14
Camps, Sports, and Excursion Fund	14
Canteen Menus	15

WELCOME TO SUNSHINE COLLEGE

We are delighted to welcome you and your child to the Sunshine College community.

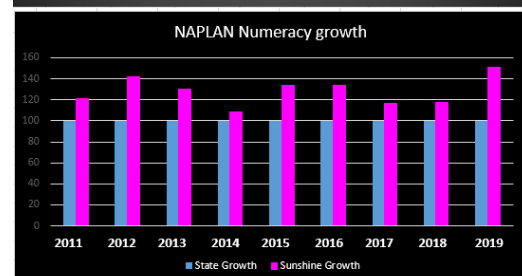
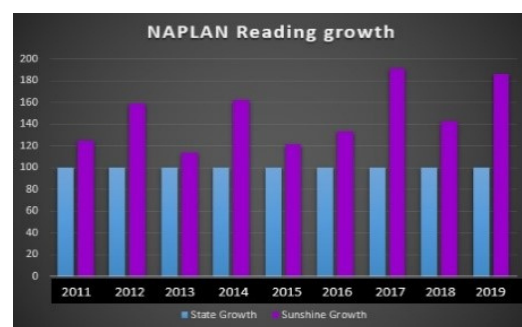
We hope to work with you to create a future for your child by providing an inclusive, collaborative, and aspirational environment where learning, growth, well-being, and relationships are valued.



Please go through this information pack carefully. It will ensure your child has a smooth transition to our school.

Did you know?

- Our **VCE results** compete favourably with our two closest non-government schools with over 90% of year 12 students securing an offer to attend University or TAFE every year. Our **top students** in the last 5 years are studying Biomedicine, Medical Radiography, Commerce/Law, Science and Accountancy.
- We are extremely proud of our **NAPLAN** results in the critical areas of Numeracy and Reading. Every year since 2011, the school has achieved greater than average state growth in both areas.
- Our highly successful literacy program: **SunLit**, has inspired teachers to visit us from all over Australia to learn how our program works, so they can copy what we do.
- Our **Maths Futures** team won two Victorian Education Excellence Awards, including the very prestigious Lindsay Thompson Award for outstanding work. This program has been adopted by many schools across, Australia, UK, New Zealand, Indonesia, and the USA.
- Our student Attitudinal Survey consistently places Sunshine College in the **top 10%** of schools in Victoria.
- Each year class has a **Pastoral Care** teacher who provides support and guidance.
- To see daily life at the college, visit our Facebook and Instagram pages: **@sunniefoods** and **@sunnie_creatives** where we proudly showcase our work!



Let's Work Together

Tim Blunt
College Principal

BELL TIMES

NORTH CAMPUS

Bell Times – Mon, Tues, Wed & Fri

8.30am	Teachers on Duty
8.40am	Locker Bell
8.50am – 9.40am	Period 1
9.40am – 10.30am	Period 2
10.30am – 10.48am	Recess
10.48am	Locker Bell
10.55am – 11.45am	Period 3
11.45am – 12.35pm	Period 4
12.35pm – 1.23 pm	Lunch
1.23pm	Locker Bell
1.30pm – 2.20pm	Period 5
2.20pm – 3.10pm	Period 6
3.10pm – END OF SCHOOL DAY	

NORTH CAMPUS

Thursday

8.30am	Teachers on Duty
8.40am	Locker Bell
8.50am – 9.40am	Period 1
9.40am – 10.30am	Period 2
10.30am – 10.46am	Recess
10.46am	Locker Bell
10.51am – 11.41am	Period 3
11.41am – 12.31pm	Period 4
12.31pm – 1.15 pm	Lunch
1.15pm	Locker Bell
1.20pm – 2.10pm	Period 5
2.10pm – 3.00pm	Period 6
3.00pm – END OF SCHOOL DAY	

WEST CAMPUS

Bell Times – Mon, Tues, Wed & Fri

8.30am	Teachers on Duty
8.37am	Locker Bell
8.50am – 9.40am	Period 1
9.40am – 10.30am	Period 2
10.30am – 10.47.am	Recess
10.47am	Locker Bell
10.55am – 11.45am	Period 3
11.45am – 12.35pm	Period 4
12.35pm – 1.23 pm	Lunch
1.23pm	Locker Bell
1.30pm – 2.20pm	Period 5
2.20pm – 3.10pm	Period 6
3.10pm – END OF SCHOOL DAY	

WEST CAMPUS

Thursday

8.30am	Teachers on Duty
8.40am	Locker Bell
8.50am – 9.40am	Period 1
9.40am – 10.30am	Period 2
10.30am – 10.47am	Recess
10.47am	Locker Bell
10.55am – 11.45am	Period 3
11.45am – 12.35pm	Period 4
12.35pm – 1.13 pm	Lunch
1.13pm	Locker Bell
1.20pm – 2.10pm	Period 5
2.10pm – 3.00pm	Period 6
3.00pm – END OF SCHOOL DAY	

NOTE: The West campus takes a bit longer to walk around, so the campuses have slightly different bell times to help students at the West campus move between classes and not miss out on any valuable learning time.

Hot Day Timetable:

If the radio forecasts a temperature of **35 degrees celcius or more**, students will be dismissed at **2.40pm**, regardless of whether the forecast temperature is reached.

GETTING READY FOR CLASS

We believe that consistent structure founded upon high expectations is critical for success. On a day to day basis, your child’s learning will be structured around their timetable. It is important that students and families develop a habit of checking their timetables regularly. This should be done after school in conjunction with checking for homework, and before leaving home to confirm the correct equipment is packed. A students timetable can be found on compass (see parents’ guide to compass page). A typical timetable on compass will look like:

Mon 24	Tue 25	Wed 26	Thu 27	Fri 28
Time of class	Teacher			
8:50: N7MUSA - NM1 - NDB	8:50: N7ENGA - NB1 - NMS	8:50: N7MATHA - NST6 - NRL	8:50: N7MATHA - NST6 - NRL	8:50: N7PWAYA - NST15 - NJS
9:40: N7MUSA - NM1 - NDB	9:40: NLCTR41 - NC3 - NRK	9:40: NLCTR41 - NC3 - NRK	9:40: NLCTR41 - NC3 - NRK	9:40: NLCTR41 - NC3 - NRK
10:55: N7HIIGGA - NB1 - NMS	10:55: N7HIIGGA - NB1 - NMS	10:55: N7MGENA - NST11 - NWS	10:55: N7HPEA - NGYM - NLC	10:55: N7HIIGGA - NB1 - NMS
11:45: N7HPEA - NB1 - NLC	11:45: N7MATHA - NST6 - NRL	11:45: N7MATHA - NST6 - NRL	11:45: N7HPEA - NGYM - NLC	11:45: N7MUSA - NM1 - NDB NCR11
Name of class and subject	Classroom			
1:30: N7ENGA - NB1 - NMS	1:30: N7SCIA - NST15 - NJS	1:30: N7MGENA - NST11 - NWS	1:30: N7MATHA - NST6 - NRL	A strike through showing a change e.g. teacher. The colour of the class will also change
2:20: N7ENGA - NB1 - NMS	2:20: N7SCIA - NST15 - NJS	2:20: N7MGENA - NST11 - NWS	2:20: N7ENGA - NB1 - NMS	

Some of these names and codes will seem strange at first, but over time they will become natural ways to identify people, places and subjects.

Students will also be asked to write their timetables in their diaries, this is so they can check on the run at school. As their daily routine becomes more familiar, students may not need to check as regularly. Knowing the timetable is a fundamental skill so that students arrive at class on time and ready to learn.

LOCKERS



Every student at Sunshine College is issued with a locker. Students leave all bags, and snacks and belongings, including **mobile phones**, in their lockers for the whole day.

Music or bells signal when students can visit their lockers. This happens 6 times per day and students do not visit the lockers outside of these times.

When can you visit the lockers?

1. Before school to collect the books and resources they need for periods 1 & 2.
2. At the beginning of recess to collect their snack and deposit books.
3. At the end of recess to collect books for periods 3 & 4.
4. At the beginning of lunch.
5. At the end of lunch to collect the books they need for periods 5 & 6.
6. At the end of the day students go back to lockers to collect bags before heading home.

MOBILE PHONES



The Department of Education & Training of Victoria has a policy of **no mobile phone for students in all schools**. This means that students are not allowed to have a phone on their person during school hours.

For further information please see our Mobile Phone Policy on the school's website: www.sunshine.vic.edu.au



Please contact the school if you need to contact your child during the school day.

SCHOOL DIARY

All students are given a school diary. This should be taken to **every class** and used to keep track of the work you need to complete and other important things to remember for your classes, like to bring a container for your food class!

It is also used by your teacher to write small notes to your adults and by your adults to write notes to your teachers.

ATTENDANCE

Students achieve greater educational outcomes when attending school every day.

We want to maximise student learning by ensuring you're your child attends school every day.

When they cannot, please let us know on through your compass account.



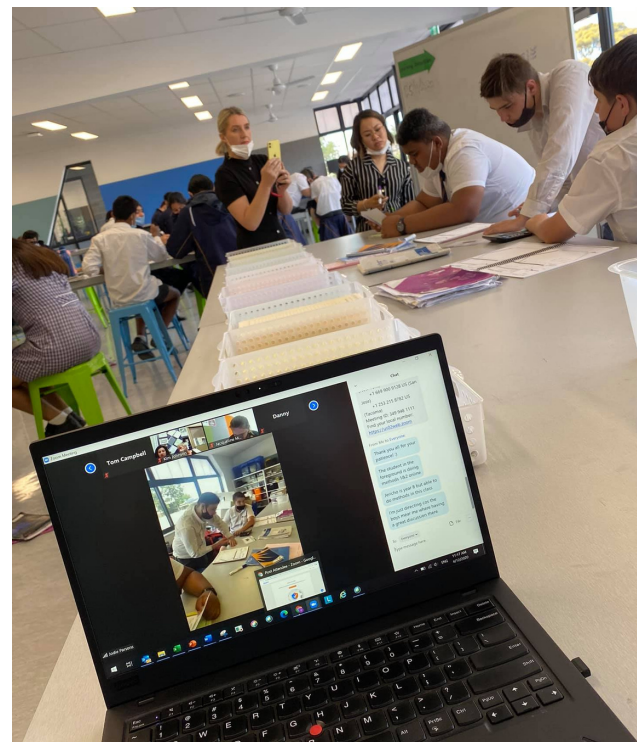
Profile (Attendance, Schedule, Reports)



Add Attendance Note (Approved Absence/Late)



View Academic Reports



VISION & VALUES

Sunshine College is proud of its reputation for producing positive and resilient students, well prepared with the breadth of outlook and the essential learning skills they will need to become successful citizens in a rapidly changing global community. Everything that encompasses Sunshine College's educational experience is guided by our vision and values.

Vision: As a school community we take pride in Creating Futures through a caring environment that enhances academic learning, personal growth and wellbeing for all students and staff.

Our values of **Growth, Learning, Wellbeing** and **Relationships** form the bedrock for happens inside the classroom and the expectations of every Sunshine College student.

We encourage our students to meet these expectations by displaying our values in the following ways:



GROWTH

Make good choices
Do your best work
Get a little better every day



LEARNING

Collaborate with others
Mistakes help learning
Be prepared to learn
Help everyone to learn



WELLBEING

Respect other students and teachers
Listen
Be kind



RELATIONSHIPS

Allowing everyone to feel safe
Completing tasks on time
Making good choices for you

These are the things we value at Sunshine College.
They are the things that will help our students create a successful future.

HOMEWORK



We know when you want to become an expert in something you need to practice. Great basketball players do not just bounce a ball once and think that's, it I'm good enough.

Musicians do not become great unless they practice regularly, and the same thing is true for all the things students learn in school. If you want to become really good at something, you need to practice!

In some subject like maths in years 7-10, homework is VOLUNTARY! Making good choices for yourself is all part of developing into a successful learner.

Study and homework clubs run in the library every week, why not go along! And remember to keep track of your homework in your diary.

UNIFORM

We are very proud to belong to Sunshine College. Our school culture is inclusive, ensuring that everyone feels like they belong. One way we achieve students feeling included is by proudly wearing our school uniform.

Our [school uniform and dress code policy](#) can be found on the school's website.

If you are experiencing financial hardship, State Schools Relief may be able to assist you with uniform. You can find information and an application form at the back of this brochure.



Our uniform can be purchased from DCS uniforms.

A current price list and details of uniform items can be found in your parent compass account.

Sunshine College uniform:

- White shirt
- Formal, grey pants/shorts
- School jumper
- School jacket/blazer
- Navy, black or white headscarf
- School dress
- School skirt
- Black leather shoes
- Navy, black or white socks/tights
- School tie (optional)



TEACHING & LEARNING AT SUNSHINE COLLEGE



OVERVIEW

At Sunshine College we strongly believe that social, emotional, and academic development are equally important to the learning process.

We know students learn best when they are supported by effective teachers, high quality resources, and rich learning experiences.

Our curriculum is carefully designed to engage students in their learning and build strong foundations in literacy and numeracy. It also supports the growth and learning of all students. Our teachers work together to create differentiated curriculum.

The best curriculum is collaboratively designed, and evidence based.

TEXTBOOKS

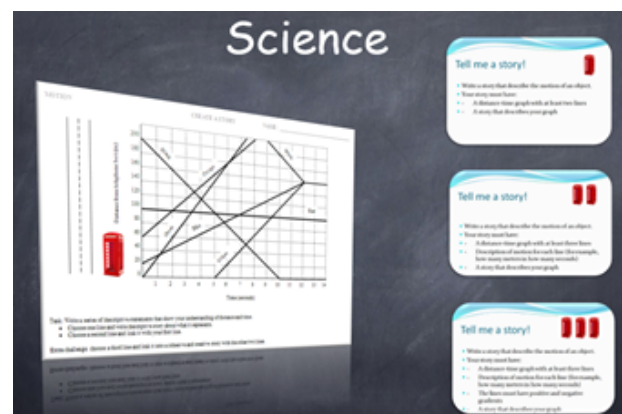
Unlike other schools our curriculum is not driven by textbooks. Instead, our curriculum is created by skilled practitioners who work collaboratively to design learning tasks based on best possible teaching and learning practices.

This type of teaching has been shown to support student understanding in schools with highest growth.

Our teachers work closely with students to identify gaps and misconceptions in their learning and address these using research philosophies. At Sunshine College we do not 'teach to the middle' in the hope that most students will have their learning needs met, instead our teachers differentiate classwork. In place of textbook costs, we apply a resource charge.

Our resource charge is cheaper than textbook – but more importantly the resource charge supports the effective delivery of our curriculum including award-winning mathematics, literacy, and pathways programs.

'JUST RIGHT' TASKS

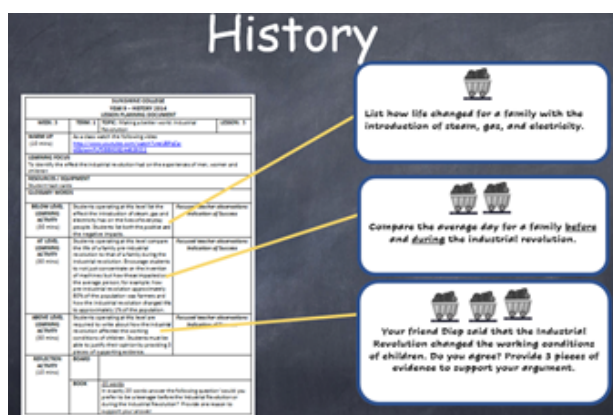


Students are active in their learning. In conjunction with their teachers, students select tasks which will have the biggest impact on their learning – 'just right' tasks.

A 'just right' task refers to a learning activity that provides an appropriate amount of challenge for each student's current level of skill and understanding.

Students who work on tasks that are too easy for them are quickly bored, disengaged, and most importantly, not learning.

Similarly, students working on tasks that are too difficult are quickly put off, restless and lose confidence in their ability, and make little progress. All students work on a similar learning intention but at a level that maximises their opportunity to learn.



YEAR 7	
	50-minute periods
SunLit	4
English	5
Science	3
Mathematics	5
Pathways - Connect	1
History/Geography	3
Health & PE	3
Visual Arts	3
Music	3
Food Technology	3
Drama	3

ELECTIVES PROGRAM

As our students grow towards maturity and independence their curriculum options begin to be determined by personal choice.

In years 9 and 10 students undertake core studies in The Arts, English, Mathematics, Science, Health and Physical Education, and Humanities. Students personalise their learning experience through the selection of a semester-based elective subject.

Over the two-year program students are encouraged to experience a wide range of learning areas. Elective subjects are designed to challenge and develop critical and creative thinking and build confidence. In year 10 eligible students may apply to participate in the Advanced Electives Program (AEP). The AEP allows students to select from a range of VCE and VET subjects to complete instead of the regular elective options.

SUNLIT PROGRAM

'SunLit' is the Sunshine College whole school reading program. We established the program in 2007 and it is based on evidence from extensive research, by Queensland academic, Dr. Carol Christensen (retired).

A distinguishing feature of the program is that it caters for readers of all abilities. Every student can develop their reading skills-from the beginners to highly skilled readers.

Every student who enrolls at Sunshine College can expect to receive targeted reading lessons designed to match and enhance their reading expertise.

All teachers in the college teach in the SunLit program. Our students receive constant reinforcement on the value and pleasure of reading throughout their daily school lives. Students from years 7-11 participate in the SunLit program four times a week and reading age is determined by their result from 'On-Demand' reading tests conducted twice a year.

SunLit students are then placed in one of four strands. They will progress to other strands according to both mid-year and end of year 'On-Demand' test results.

The 4 SunLit Strands:

- Decoding Strand
- Comprehension Transition Strand
- Comprehension Strand
- Strategies Strand

Each strand has a tailor-made timetable of reading activities based on Dr. Christensen work developed by our innovative Sunlit team at Sunshine College.

You can find more information about our literacy program in our SunLit brochure.

Students have 4 periods of SunLit lessons each week and the school provides all of the resources need for your student to learn and take part in these lessons



MATHS FUTURES PROGRAM



The Sunshine College approach to teaching and learning mathematics is a well-known, respected, and effective way to teach maths.

The team have been developing, refining, and sharing our differentiated model since 2008. In our classes, students are empowered to make decisions on their learning and teachers work together in the same lessons to ensure every child is challenged with work that is "just right" for them.

Students are formally assessed at the end of each term to track their progress. When students reach a year 11 level of mathematical understanding, there is the opportunity to complete an early VCE subject in maths.

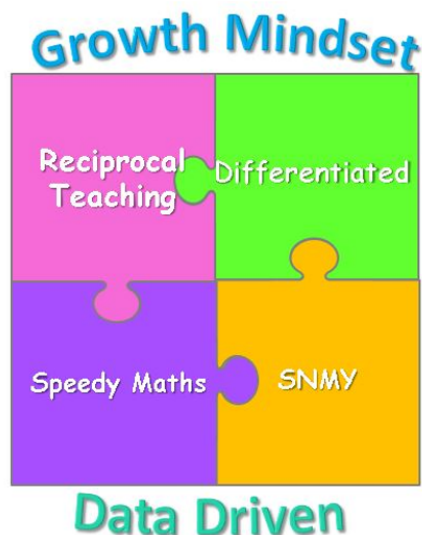
We currently have students in year 8 studying VCE mathematics.

Every student requires a calculator and a grid book, grey lead pencils and whiteboard pens for their maths lessons.

Students have 5 periods of maths each week and the 4 different parts of the program look something like the timetable below.

	1	2	3	4	5
Week 1	Diff	Diff	RT	SNMY	ICT
Week 2	Diff	Diff	RT	SNMY	Speedy

Instead of purchasing a textbook, part of the Resource Charge pays for all books, school created resources. The Maths Futures brochure gives more information about the program.



INSTRUMENTAL MUSIC

The Instrumental Music program is an optional addition to weekly lessons of the students. It is designed to complement other areas of learning within the College.

Through instrumental lessons and ensemble performances, the program is intended to enhance student learning, teamwork, personal development, and community interaction.

Our music teachers provide students with instrumental lessons catering for the individual student with the future goal of performing in one of the College's bands.

Involvement in the Instrumental music program is a very enriching and rewarding experience for students prepared to exercise their sense of responsibility.

Lessons occur weekly on a rotating timetable so that students miss one period of normal lessons each week.

If you would like your child to be considered for the Instrumental Music program, please complete the **application form** at the back of this brochure **and** return to the school on or before your child starts school.

DEAF FACILITY

Sunshine College is an inclusive school and we believe that all deaf students are entitled to have access to a mainstream curriculum. The Sunshine College Deaf Facility operates at the West campus for students in years 7-12. Our 'high support/high expectations' philosophy allows all of our students to achieve their personal best within a diverse and inclusive learning environment.

COMMUNICATION

At Sunshine College we value relationships and believe that a positive partnership between home and school is essential to the success of every child. We have a number of methods of communication to facilitate the partnership between school and home.

These include text messaging, email, phone calls, messages on the school website and written messages from teachers in your child's planner. Every student has their own Compass account and their parent or guardian has a separate account. Where students live between two parents in separate homes, each parent may have a different account.

Student and Parent accounts are different!

Your login details for your Parent Compass Account are emailed to you or sent in an SMS after we have received your completed enrolment form.

If you have not received your login details yet, please contact the school.



PARENT COMPASS

The parent portal of Compass has many functions including the ability to:

- Access your child's assessments from each teacher
- Book your Parent/Student/Teacher conferences
- View class and school attendance information
- Approve or enter upcoming or past absences for your son/daughter
- Complete your child's course information
- Access information regarding upcoming events and news
- Update your registered email and mobile number (used for SMS alerts) details
- Download, print and approve upcoming excursions
- Pay school fees, charges, and contributions

We encourage you to log in regularly to ensure you stay up to date with your child's progress at school and to access the other functions listed above.

You can start using Compass by accessing the link from the school's website, or alternatively, you can download the Compass School Manager application on your smart phone or device.



**Not all functions are available from the app.*

STUDENT COMPASS

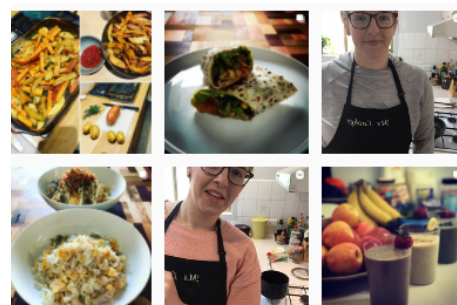
It is important that students use their own login details as students access different functions compared to their parents. These include the ability to submit work and contacting teachers.

Please contact the school office if you have any issue with Compass.

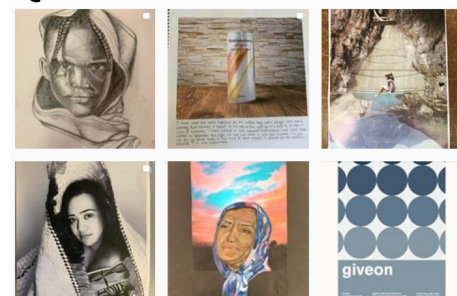
SOCIAL MEDIA

Sunshine college has lots to celebrate and we share examples of both our successes and our daily life as a school on our Facebook page.

Please follow us on Facebook to keep informed of everything we are doing as a school by scanning the QR code or following @sunshinecollegevic



@SUNNIEFOODS



@SUNNIE_CREATIVES



RESOURCE LIST

At Sunshine College we have an aspirational and collaborative culture. Our skilled teaching teams have created the most effective resources to ensure all students achieve the success they deserve. Please visit your Parent Compass account to see the resource and booklist for your child.

PARENT PAYMENTS

All College Charges and Voluntary Contributions can be paid to the College via any of the following options:

BPAY

Family Statements show your BPay details. If you would like your payment to be allocated to a specific charge please advise the school by email: sunshine.co@edumail.vic.gov.au (attention of Bernie Thatcher).

EFTPOS/CREDIT CARD

Parents wishing to make payments in person via card may do so at the Administration Office of our North and West campuses. Payments via credit card can also be taken over the phone by contacting the campus office.

Alternatively, if you wish to email us with your payment information you can do so by emailing sunshine.co@education.vic.gov.au with your card details, your name, your child's name and the charge that you would like your payment to be allocated to.

CASH

Cash payments can be made at the Campus Front Office during the hours of 8:30am to 4:00pm on School Days.

Families who are experiencing financial difficulty are invited to make an appointment with the Assistant Principal Student Engagement & Community to discuss an alternative payment plan.

SCHOOL BUS

For students who travel to Sunshine College from Derrimut, Deer Park, Deer Park West, or Cairnlea areas we have a school bus service for the West Campus.



The cost per term is \$160.

If you are interested in using this service, please contact our office on 8311 5200 as bus spaces are limited.

CAMPS, SPORT & EXCURSION FUND (CSEF)

You may be eligible for additional financial support which is available to families who are holders of Veterans Affairs Gold Card or an eligible Centrelink Health Care Card (HCC) or Pensioner Concession Card (PCC) holder, OR are a temporary foster parent.

More information and an application form can be found on our website:

www.sunshine.vic.edu.au/school-camps

BUZZ CANTEEN / HTC CANTEEN

At Sunshine College we value well-being and we are working towards healthier options in the food we offer to our students.

We are trialling a new menu at our Buzz Café on the West campus and hoping to extend this to the North campus soon.

We hope that you will support our move to a healthier way of life for students by encouraging them to make choose healthier options when purchasing and not supplying fast food for school lunches.

For students who want to bring lunch from home we have microwave ovens available to them to heat their food. For students at the North campus who would like to buy a school lunch they have access to the HTC canteen.



Canteen orders
can also be
placed through
the Qkr! app
Download from
the app store



All chicken is
Halal certified



Breakfast

Egg & Bacon Muffin \$4.00
Ham & Cheese Toastie \$3.50
Ham, Cheese & Tomato Toastie \$4.00
Fresh Yoghurt \$3.50 v

Sushi

2 rolls from \$6.00
Chicken Teriyaki, California, Tuna & Avocado

From the bakery

Assorted Gourmet Pies \$4.50
Sausage Roll (Salt Reduced) \$3.50
Assorted Muffins \$3.50
Vegetable Pastie \$4.00 v

Recess selection

Toasted Bacon & Egg on Wholemeal Roll \$4.0
Homemade Pizza Slice from \$3.00
Nacho with Salsa, Sour Cream, Low Fat Cheese \$4.00 v GF
Grilled Chicken Burger w Lettuce, Mayo \$5.00
Veg Sub w Cos Lettuce, Tomato, Red Onion, Mayo \$5.00 v
Angus Beef Burger with Cheese, Tomato Sauce \$5.00
Baked Sweet Potato Rosti: 3 for \$3.00 GF Vegan
Baked Falafel Wrap with Hommus, Lettuce and Onion \$5.00 GF Vegan

Lunch Selection

Homemade Pasta \$4.00 small \$5.00 large
Stir Fry or Hokkien Noodle (Beef/Chicken) \$4.00 small \$5.00 large
Stir Fry Vegetarian Rice \$4.00 small \$5.00 large v
Baked Potato with Sour Cream \$4.00 v GF
Homemade Soups (Term 2 & 3) \$4.00 GF
Grilled Chicken Burger with Lettuce, Mayo \$5.00
Baked Chicken Schnitzel Panini with Lettuce, Cheese, Mayo \$5.00
Baked Chicken Parma Panini with Napoli Sauce & Cheese \$5.50
Angus Beef (lean) Burger with Cheese, Tomato Sauce \$5.00
Homemade Pizza Slice from \$3.00 v
Meatball Sub with Napoli Sauce & Cheese \$4.00
Veg Sub with Lettuce, Tomato, Red Onion, Mayo \$5.00
Baked Falafel Wrap with Hommus, Lettuce & Onion \$5.00 GF Vegan

Cold deli section

Fruit Salad with Yoghurt \$4.50
Garden Salad with Italian Dressing, Greek Salad, Taboli,
Roast Veg Vegan & Cous Cous Roast Veg \$5.00
Yoghurt with Berries \$4.50
Jelly \$1.50
Seasonal Fruit from \$1.00
Hummus Dip with Celery or Carrot Sticks \$3.00
Tzatziki Dip with Celery or Carrot Sticks \$3.00

Sandwiches

Made to order

Assorted Breads - Gluten Free Available upon request
Salad w Lettuce, Tomato, Cucumber Red Onion \$4.00 v
Salad add Ham \$4.50
Salad add Chicken \$4.50
Salad add Cheese \$4.50 v
Egg & Lettuce \$4.50 v
Tuna with Tomato & Red Onion \$4.50
Chicken Lettuce & Mayo \$4.50
Chicken with Avocado & Cheese \$4.50
Ham Cheese & Tomato \$4.00
Cheese & Tomato \$3.50 v
Add .50c for Rolls or Wraps
Add \$1.00 for Focaccia

Snacks

Popcorn \$2.00
Delites \$1.00
Red Rock Deli Chips \$2.50
Assorted Muffins, Assorted Slices \$3.50

Ice creams

Assorted Paddle Pops \$2.00
Mini Callippo \$1.50
Icy Twist \$1.50
Frozen Yoghurt \$2.50

Drinks

250ml Flavoured Sparkling Mt Franklin Water \$2.00
600ml Mt Franklin Water \$2.50
750ml Pump Flavoured Water Variety \$4.00
450ml Mt Franklin Sparkling Water \$3.00
Up and Go Varieties \$3.00
300ml Oak Milk Flavoured \$3.00



HARVESTER
TECHNICAL COLLEGE

CANTEEN PRICE LIST



❖ HOT CHIPS SMALL	\$2.00
❖ HOT CHIPS LARGE	\$3.00
❖ HOT CHIPS SMALL WITH CHEESE & GRAVY	\$2.50
❖ HOT CHIPS LARGE WITH CHEESE & GRAVY	\$3.50
❖ HAMBURGER WITH THE LOT	\$5.00
❖ CHICKEN SCHNITZEL BURGER	\$5.00
❖ HOTDOG	\$3.00
❖ HOTDOG WITH CHEESE	\$3.50
❖ HOTDOG IN BATTER	\$3.00
❖ EGG AND BACON ROLL	\$4.50
❖ POTATO CAKE ROLL	\$2.00
❖ POTATO CAKE ROLL WITH CHEESE & GRAVY	\$2.50
❖ CHICKEN STRIP ROLL	\$4.00
❖ CHICKEN STRIP ROLL WITH CHEESE & GRAVY	\$4.50

❖ KRANSKY ROLL	\$5.00
❖ MEAT PIE/SAUSAGE ROLL	\$3.00
❖ DIM SIMS FRIED OR STEAMED	\$1.00
❖ POTATO CAKES	\$1.00
❖ DIM SIMS/POTATO CAKES 3 FOR	\$2.50
❖ DIM SIMS/POTATO CAKES 4 FOR	\$3.00
❖ SWEET CHILLI TENDER WAP	\$5.00
❖ COLD MEAT/SALAD ROLL	\$5.00
❖ MUFFINS	\$2.00
❖ CHOCOLATES	\$2.00
❖ PIECE OF FRUIT	\$1.00
❖ CANS OF SOFT DRINK	\$2.00
❖ WATER	\$2.00
❖ FLAVOURED MILK	\$2.00
❖ POWERADE	\$3.50
❖ COFFEE/HOT CHOCOLATE	\$3.00





North Campus

Northumberland Road
Sunshine North
P: 8311 8500

West Campus

25A Lachlan Road
Sunshine West
P: 8311 5200

E-mail: sunshine.co@education.vic.gov.au **Website:** sunshine.vic.edu.au

Facebook: facebook.com/sunshinecollegevic